

NAVARA D22

SHIFT **the way you move**



Specifications

	4x2 DX [†] Single Cab Chassis	4x4 DX [†] Single Cab Chassis	4x4 ST-R Dual Cab Ute
Engine			
2.5 litre intercooled turbo-diesel, DOHC, YD25 Diesel	●	●	●
Displacement (cc)	2488	2488	2488
Bore x stroke (mm)	89 x 100	89 x 100	89 x 100
Compression ratio	16.5:1	16.5:1	16.5:1
Max power (kW@rpm)	98@3600	98@3600	98@3600
Max torque (Nm@rpm)	304@2000	304@2000	304@2000

	4x2 DX [†] Single Cab Chassis	4x4 DX [†] Single Cab Chassis	4x4 ST-R Dual Cab Ute
Transmission			
5-speed manual	●	●	●
Ratio 1st manual	3.580	3.580	3.580
Ratio 2nd manual	2.077	2.077	2.077
Ratio 3rd manual	1.360	1.360	1.360
Ratio 4th manual	1.000	1.000	1.000
Ratio 5th manual	0.760	0.760	0.760
Ratio reverse manual	3.636	3.636	3.636
Final drive ratio manual	3.700	4.625	4.625
Transfer ratio - high		1:1	1:1
Transfer ratio - low		2.02:1	2.02:1

	4x2 DX [†] Single Cab Chassis	4x4 DX [†] Single Cab Chassis	4x4 ST-R Dual Cab Ute
Dimensions			
Overall length (bumper to bumper) (mm)	5020**	5020**	5180
Overall width (excluding mirrors) (mm)	1690**	1825**	1825
Overall height (excluding roof rails) (mm)	1610**	1700**	1725
Wheel base (mm)	2950	2950	2950
Track front/rear (mm)	1395/1390	1525/1505	1525/1505
Minimum turning circle kerb to kerb (m)	11.2	12	12.6
Ground (clearance unladen) (mm)	155	220	225
Overhang - front (mm)	920	920	920
Overhang - rear (mm)	1150**	1150**	1310
Angle of approach	27	31	31
Angle of departure	28**	31**	25
Load space - length (mm)			1485
Load space - width (mm)			1390
Load space - height (mm)			435
Gross Vehicle Mass (GVM [^]) (kg)	2730	2860	2860
Tare mass (kg)* including options	1360#	1559#	1842#
Carrying capacity (kg) (excluding tray on cab chassis)	1370	1301	1018

	4x2 DX [†] Single Cab Chassis	4x4 DX [†] Single Cab Chassis	4x4 ST-R Dual Cab Ute
Rated towing capacity*			
Trailer with brakes (kg)	1500	2800	2800
Trailer without brakes (kg)	750	750	750
Towball download (kg)	See table	See table	See table

	4x2 DX [†] Single Cab Chassis	4x4 DX [†] Single Cab Chassis	4x4 ST-R Dual Cab Ute
Fuel			
Recommended fuel type - Diesel	●	●	●
Fuel tank capacity (litres)	75	75	75
Fuel consumption l/100km (combined ADR 81/02) ^h (manual)	7.3	9.1	9.2

	4x2 DX [†] Single Cab Chassis	4x4 DX [†] Single Cab Chassis	4x4 ST-R Dual Cab Ute
Mechanical			
Limited Slip Differential (LSD)	●	●	●
Front brakes - ventilated discs	●	●	●
Rear brakes - drum	●	●	●
Front suspension - double wishbone with stabiliser bar	●	●	●
Rear suspension - leaf spring	●	●	●
Power steering	●	●	●

	4x2 DX [†] Single Cab Chassis	4x4 DX [†] Single Cab Chassis	4x4 ST-R Dual Cab Ute
Wheels/Tyres			
15x5½ JJ steel wheels with 195/R15 tyres	●		
16x6J steel wheels with 205/R16 tyres		●	
16x7JJ alloy wheels with 265/70R16 tyres			●
Full size steel spare wheel	●	●	●

	4x2 DX [†] Single Cab Chassis	4x4 DX [†] Single Cab Chassis	4x4 ST-R Dual Cab Ute
Interior			
Air-conditioning	●	●	●
Seating capacity	3	3	5
Cloth seat trim	●	●	Sport
Height adjustable front headrests			●
Power windows	●	●	●
Central locking	●	●	●
4 spoke steering wheel	●	●	●
Tilt adjustable steering	●	●	●
6 CD in-dash auto changer with AM/FM radio and 2 speakers			●
Single CD player with AM/FM radio and 2 speakers	●	●	
Bluetooth® handsfree phone system	●	●	●
Auxiliary MP3 player input jack	●	●	●
FULL iPod™ connectivity (or USB storage device) via USB connection	●	●	●
12v power socket	●	●	●
Glovebox	●	●	●
Front door pockets	●	●	●
Centre console with lid			●
Assist grip (front passenger side only)	●	●	●
Courtesy light	●	●	●
Front map lights			●
Floor trim	Vinyl	Vinyl	Carpet

	4x2 DX [†] Single Cab Chassis	4x4 DX [†] Single Cab Chassis	4x4 ST-R Dual Cab Ute
Instrumentation			
Speedometer, tachometer and dual trip meters	●	●	●
Digital clock	●	●	●
4WD indicator		●	●
Fuel/water temperature gauges and low fuel warning light	●	●	●
Distance to next service and engine oil level indicator			●
Glow indicator light	●	●	●

	4x2 DX [†] Single Cab Chassis	4x4 DX [†] Single Cab Chassis	4x4 ST-R Dual Cab Ute
Safety			
Driver and front passenger front-impact SRS airbags	●	●	●
Anti-lock Braking System (ABS)	●	●	●
Front seatbelt pretensioners	●	●	●
3 point Emergency Locking Retractor (ELR) seatbelts	2 (Driver and left passenger)	2 (Driver and left passenger)	4 (Excludes rear centre passenger)
Side intrusion beams	●	●	●
Child safety locks			●
Flame retardant interior trim	●	●	●
Fuel tank rollover valve	●	●	●
Load sensing valve	●	●	●
Rear window demister			●
Day/night rear view mirror	●	●	●

NAVARA D22

SHIFT_the way you move



Specifications

	4x2 DX* Single Cab Chassis	4x4 DX* Single Cab Chassis	4x4 ST-R Dual Cab Ute
Exterior			
Alloy sports bar and side steps			•
Halogen headlights	•	•	•
Front bumper	Black	Black	Body colour
Overfender flares		Black	Body colour
Rear chrome step bumper			•
Front mud flaps	•	•	•
Rear mud flaps			•
2 speed/intermittent windscreen wipers	•	•	•
Power mirrors			•
Door mirrors	Black	Black	Chrome
Lockable fuel lid	•	•	•
Front towing hooks	•	•	•
Antenna	•	•	•
Chrome grille surround			•
Load restraint hooks (4)			•

Colours

	4x2 DX* Single Cab Chassis	4x4 DX* Single Cab Chassis	4x4 ST-R Dual Cab Ute
Brilliant Silver*	•	•	•
Polar White	•	•	•
Cosmic Black*	•	•	•
Burning Red	•	•	
Burgundy*			•
Deep Sapphire*			•

Warranty

	4x2 DX* Single Cab Chassis	4x4 DX* Single Cab Chassis	4x4 ST-R Dual Cab Ute
3 year / 100,000kms	•	•	•
3 year 24-Hour Roadside Assistance Program	•	•	•
Genuine Nissan Extended Warranty	Opt	Opt	Opt

Opt

Optional

Not available

Standard

* Indicates a metallic colour, which is available at extra cost.

† Note that Single Cab Chassis models do not come with tray.

**Excludes tray.

Tare mass = unladen mass of vehicle with 10 litres of fuel, excludes tray body for Single Cab Chassis vehicles.

^ Towing capacity is subject to towbar/towball capacity. The capacity may be reduced if a non genuine Nissan towbar is fitted. The permitted download is directly related to the laden mass of vehicle. At the maximum laden mass of the vehicle (GVM[^]), the maximum towball download is 80kgs.

^ Figures have been calculated in accordance with ADR81/02. Actual fuel consumption will vary depending on driving conditions, driver behaviour, the condition of your vehicle and the accessories fitted.

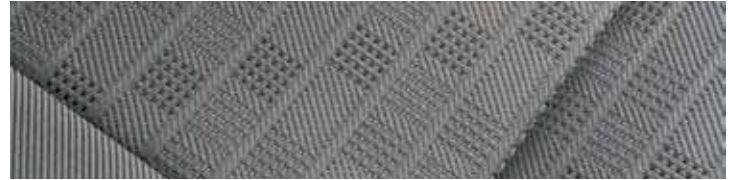
^ GVM = Gross Vehicle Mass. GVM includes the driver, passengers, full fuel tank and luggage.

- iPod is a registered trade mark of Apple Inc.

		Single Cab	Dual Cab
Towball download	Loaded Vehicle Mass		
80kg	GVM [^] (All models)	GVM [^]	GVM [^]
150kg	Reduced loaded vehicle mass below GVM [^] by	40kg	70kg
200kg	Reduced loaded vehicle mass below GVM [^] by	110kg	125kg
250kg	Reduced loaded vehicle mass below GVM [^] by	180kg	170kg

GVM = Gross Vehicle Mass

If the loaded vehicle mass is reduced as shown in the table, the towball download can be increased correspondingly. Accordingly, if the laden mass is 170kgs less than the GVM[^] (Dual Cab models), a towball download of 250kgs is approved. Different trailer types and different trailer manufacturers have varying towball downloads. The customer will need to contact the trailer manufacturer for information as to the download. Nissan is not able to make any recommendation on the use or suitability of load-levelling or weight distribution devices to be fitted to the vehicle. Customers should contact the manufacturers of these devices for further information.



DX 4x2 Interior.



DX 4x4 Interior.



ST-R Interior.

my nissan
comprehensive owner support



FINANCIAL SERVICES



For more information please visit nissan.com.au, ask your Nissan Dealer or phone 1800 035 035 during normal business hours.

Follow us: @Nissan_Aus

Like us: Nissan Australia

Check out: NissanAustralia Channel



All illustrations, information and specifications presented and referred to in this brochure were correct at the time this brochure was approved for printing. The colours in the photographs may vary from actual colours. However, Nissan Motor Co (Australia) Pty. Ltd. reserves the right, subject to the laws of Australia and/or the regulations of any competent authority which may apply from time to time, at its discretion at anytime and without prior notice to discontinue or change the models, features, specifications, designs and prices of the products referred to in this brochure and any optional equipment therefore without incurring any liability whatsoever to any purchaser or prospective purchaser of any such products. Some of the items referred to herein are optional at extra cost. Some options may be required in combination with other options. Always consult your Nissan Dealer for the latest information on models, specifications, features, prices, options and availability. Nissan Motor Co (Australia) Pty. Ltd. ACN 004 663 156. Printed May 2011. NAD0048